

ISO 9001:2015

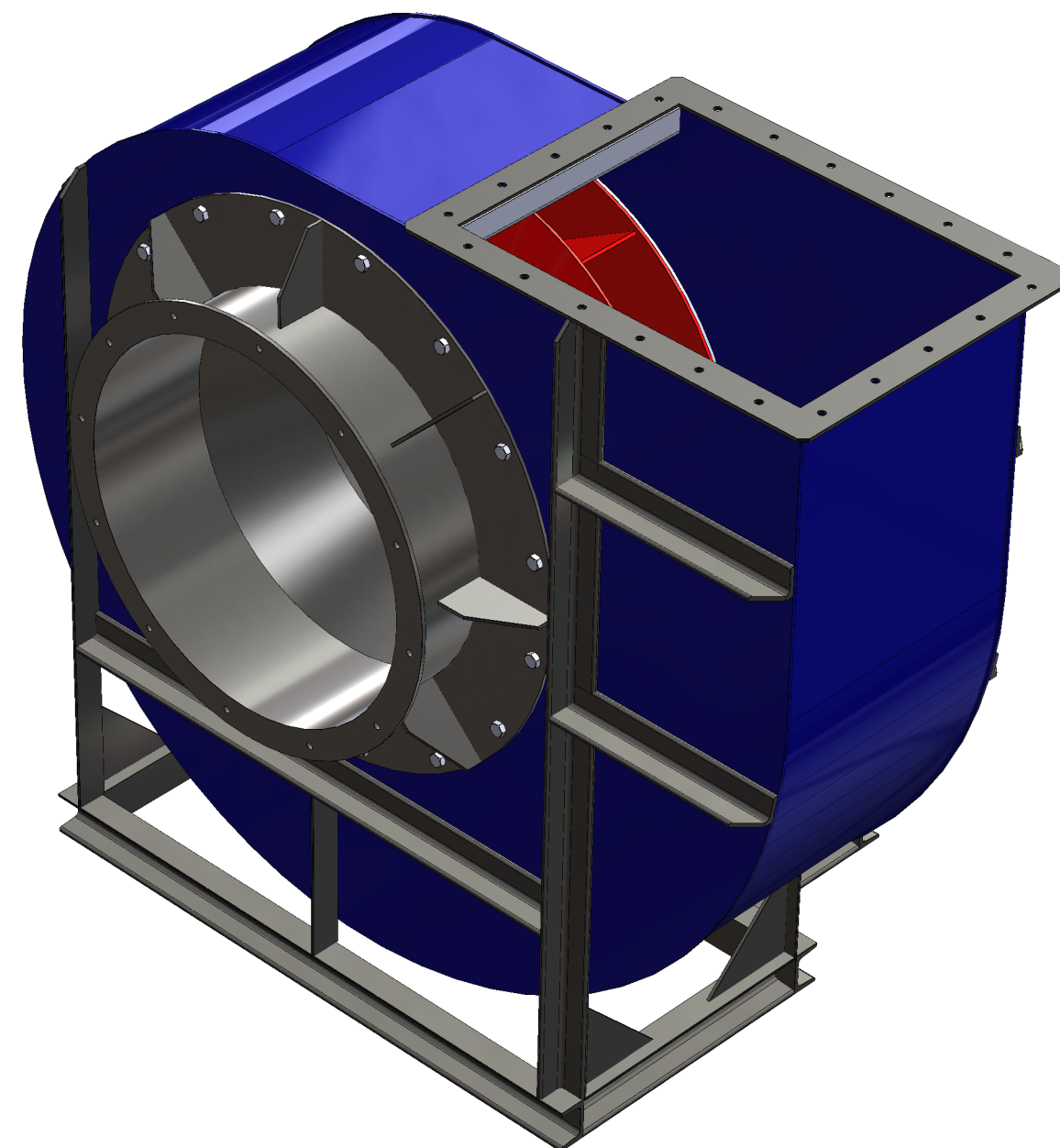


PROUDLY  
MADE IN  
INDIA



## Tech US Centrifugal Blowers & Fans

MANUFACTURE OF INDUSTRIAL BLOWERS & FANS



## TECH UNIVERSE'S SYSTEMS PVT. LTD.

Plot No. A 290-291 Konar Business Park, Road No. 16/Z, Wagle Estate Thane (W) Mumbai- 4000 604 India

Contact No. +91 8591311681 / 78 | +91 8983162165 | +91 98927 69344

Web: [www.techus.co.in](http://www.techus.co.in) | Email: [sales@techus.co.in](mailto:sales@techus.co.in) | [info@techus.co.in](mailto:info@techus.co.in)

Factory: Plot No. D-7/4, Road No. 33, Wagale Estate, Thane (W) Mumbai - 400604 India



## TECH UNIVERSE'S SYSTEMS PVT. LTD.

Web: [www.techus.co.in](http://www.techus.co.in) Email: [sales@techus.co.in](mailto:sales@techus.co.in) Contact No. +91 85913 11681/ 78

# WELCOME TO COMPANY PROFILE

Tech Universe's Systems Pvt. Ltd. established in 2020, is a premier manufacturer dedicated to delivering high-quality Centrifugal Blower, Industrial Fan, Axial Fans & Fire Safety Products, Equipment, Fire Suppression Systems. As an ISO 9001:2018 certified and MSME registered company, we pride ourselves on our comprehensive service offerings, which include Centrifugal Blower & AMC and fire extinguisher refilling. Our commitment to reliability and performance ensures that our products and services consistently meet the highest standards.

At Tech US, we are passionate about providing innovative and dependable solutions for fire prevention and control. Our mission is to protect lives and assets through our cutting-edge technology and meticulous attention to detail. Our expertise and unwavering dedication to excellence make us a trusted partner for businesses seeking to enhance their fire safety measures and ensure comprehensive protection and peace of mind.

## Vision

Our vision is to produce high-quality centrifugal blowers, industrial fans, and axial fans that exceed customer expectations. At Tech US, we value our customers deeply and are dedicated to delivering innovative solutions and exceptional service that meet and surpass their specifications, setting new standards in the industry.

## Mission

Our Mission is to lead the industrial air movement sector by creating premium centrifugal blowers, industrial fans, and axial fans that set benchmarks for innovation and reliability. At Tech Universe's Systems Pvt. Ltd., we are dedicated to harnessing advanced technology and engineering excellence to deliver exceptional products and services, ensuring optimal performance and satisfaction for our clients across diverse industries.

## Major Clients



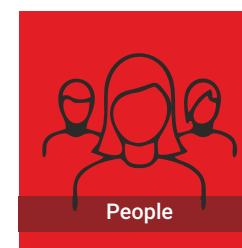
INDIA'S TOP MANUFACTURER AND EXPORTER OF TECH US BLOWERS,  
BLOWER SYSTEMS & CUSTOM ENGINEERING SOLUTIONS

## Our Products

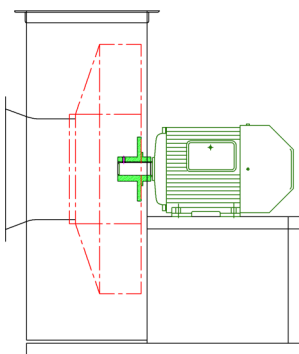
- Tech US Brand  
**Centrifugal Industrial Blower & Fans**
- Tech US Brand  
**Axial Flow Fans**
- Tech US Brand  
**Restaurant Ducting with Exhaust Blower**
- Tech US Brand  
**Tailored Fabrication of Equipment, Systems & Components to your Specifications.**



## Our Principles

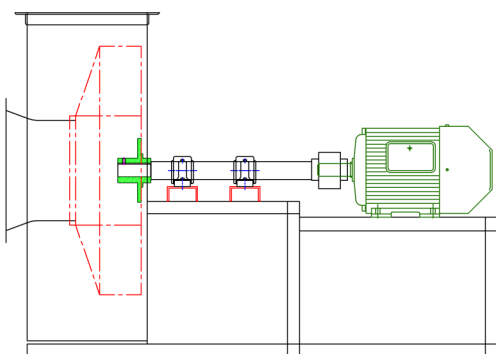


Centrifugal Fans Are Recommended By Drive



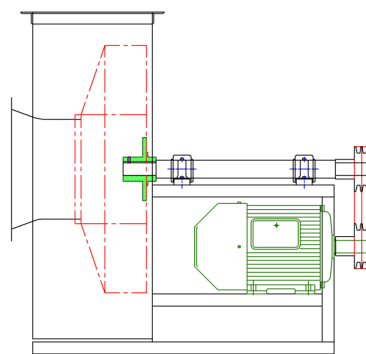
Direct Drive

Motor Directly Mounted on Impeller



Couple Drive

Motor Attached by Couple with Shaft



V-Belt Drive

Motor Connected via Pulley and V-Belt

Centrifugal Blower Specifications

Blower Type	SISW Blower, DIDW Blower
Fan Duty	ID Fan, FD Fan & SA Fan
Air Flow Rate	850 m³/hr to 25,500 m³/hr
Static Pressure	2" to 12 " Water Colume
Drive	Direct Drive, V-Belt Drive Couple Drive
Operating Speed (RPM)	960, 1440 & 2880 RPM
Impeller	Dynamic and Static Balancing Excellence
Impeller Design	Welding Type, Riveting Type, FRP Lining Type
Impeller Type	Radial Type, Backward Curve, Forward Curve
Material of Construction	Stainless Steel, Mild Steel, GI

Fan Industry Solutions



Paint Bhooth



Shot Blasting



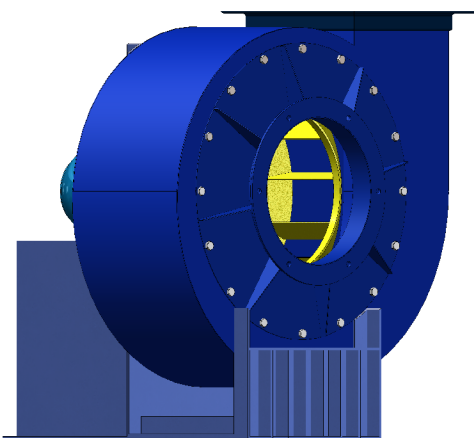
Industrial Ventilation



Mall HAVC System

Low Pressure Blower- Series

Engineered for high-volume air movement, these blowers excel in low static pressure settings delivering optimal performance in CFM. Their efficiency diminishes in medium to high static pressure environments.

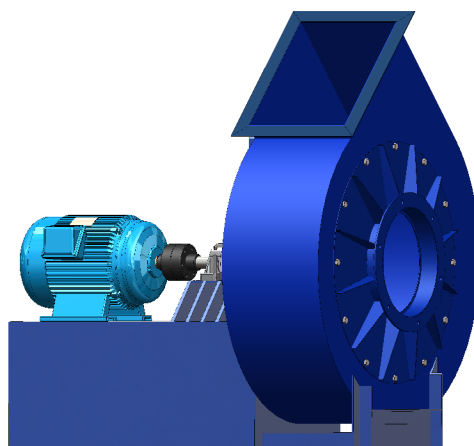


Specification

Air Flow	: Up to 25,500 m³/hr
Static Pressure	: Up to 200mm WC
Temperature	: Up to 500°C
Static Efficiency	: Up to 80%
Motor Power	: Up to 200 Kw
RPM	: Up to 2880
Types of Drive	: Direct   Couple   V-Belt
MOC	: Mild Steel & Stainless Steel

Medium Pressure Blower- Series

Medium pressure centrifugal blowers are meticulously crafted for balanced airflow and pressure, excelling in material handling, dust collection, and combustion air supply with unwavering efficiency across diverse industrial applications.

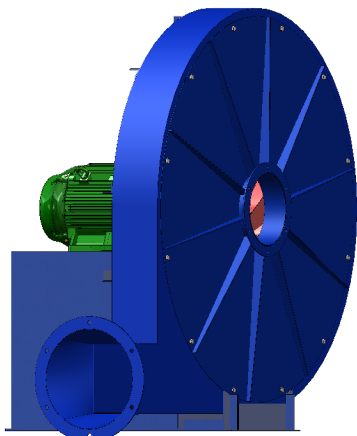


Specification

Air Flow	: Up to 25,500 m³/hr
Static Pressure	: Up to 600mm WC
Temperature	: Up to 500°C
Static Efficiency	: Up to 85%
Motor Power	: Up to 250 Kw
RPM	: Up to 3000
Types of Drive	: Direct   Couple   V-Belt
MOC	: Mild Steel & Stainless Steel

High Pressure Blower- Series

High pressure blowers are used for demanding industrial applications, delivering robust airflow & pressure to support processes such as ventilation, air knives, and pneumatic conveying with exceptional efficiency.



Specification

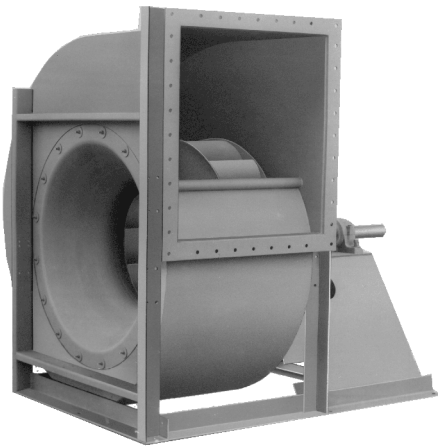
Air Flow	: Up to 25,500 m³/hr
Static Pressure	: Up to 1,000mm WC
Temperature	: Up to 500°C
Static Efficiency	: Up to 85%
Motor Power	: Up to 250 Kw
RPM	: Up to 3000
Types of Drive	: Direct   V-Belt
MOC	: Mild Steel & Stainless Steel



**DIDW Fans (Double Inlet Double Width Fans)**

DIDW fans, featuring dual suction inlets are designed for high-flow, low-pressure applications and operate at lower RPM. Tech US DIDW fans come in both backward and forward curve designs and are wider than SISW fans, with impellers supported by bearings on both ends.

Used in HVAC, ventilation, and paint shops, dual-inlet fans ensure efficient, reliable performance

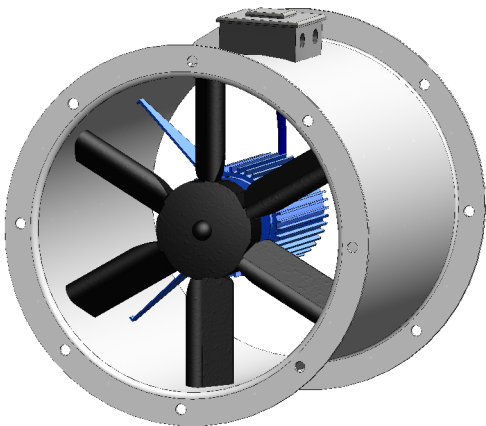


**Specification**

Air Flow	:	Up to 10,000 m³/hr
Static Pressure	:	Up to 100mm WC
Temperature	:	Up to 50°C
Static Efficiency	:	Typically around 65%
Motor Power	:	Up to 250 kW
RPM	:	Up to 3000
Types of Drive	:	Shaft   V-Belt
MOC	:	Mild Steel & Stainless Steel

**Axial Fans**

Axial fans move air along their axis, offering high airflow with low pressure. Ideal for ventilation, cooling, and industrial uses, they suit low to medium-pressure environments

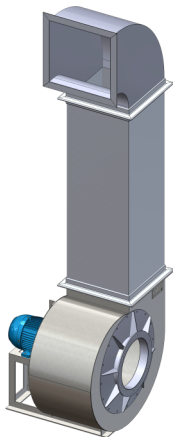


**Specification**

Air Flow	:	Up to 15,000 m³/hr
Static Pressure	:	Up to 30mm WC
Sweep Diameter	:	12 Inch to 60 Inch
Static Efficiency	:	Up to 50%
Motor Power	:	Up to 75 KW
RPM	:	Up to 3000
Types of Drive	:	Direct   V-Belt
MOC	:	Mild Steel & Stainless Steel

**Kitchen Duct with Blower**

Kitchen ducts with centrifugal blowers manage air quality by expelling smoke and heat while introducing fresh air, enhancing ventilation and comfort.



**Specification**

Air Flow	:	850 to 15000 m³/hr
Static Pressure	:	Up to 600mm WC
Temperature	:	Up to 200°C
Phase	:	Three Phase
Voltage	:	220-380 V
Horse Power	:	5 HP to 40 HP
Speed	:	960 to 1440 RPM
Types of Drive	:	Direct   Couple   V-Belt

**Centrifugal Blower Data Sheet**

CMH (m³/hr)	CFM (ft³/min)	Static Pressure (Inch)	Static Pressure (mm)
850	500	2	50
1700	1000	3	75
2550	1500	4	100
3040	2000	5	125
4250	2500	6	150
5100	3000	7	175
5950	3500	8	200
6800	4000	10	250
7650	4500	12	300
8500	5000	14	350
9350	5500	16	400
10200	6000	18	450
11050	6500	20	500
1190	7000	22	550
12750	7500	24	600
13600	8000	26	650
14450	8500	28	700
15300	9000	30	750
16150	9500	31	800
17000	10000	33	850
17850	10500	35	900
18700	11000	37	950
19550	11500	39	1000
20400	12000		
21250	12500		
22100	13000		
22950	13500		
23800	14000		
24655	14500		
25500	15000		

For non-standard, custom blower solutions or technical inquiries, reach out to our engineering support team